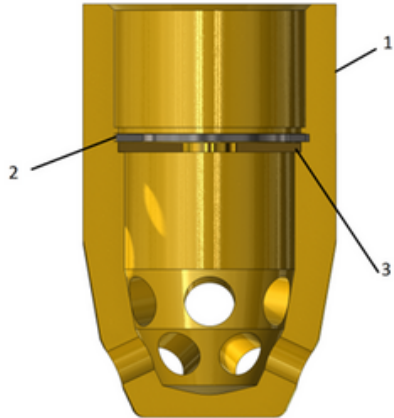
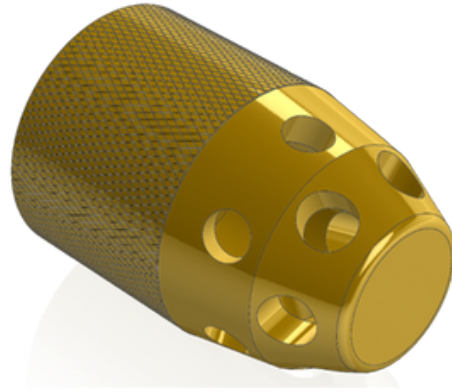


### Discharge Nozzle - Multiple Part Numbers



1 – Nozzle body  
2 - Circlip  
3 – Orifice plate



Part Number	Description	Size*	DN	Height, mm	Orifice Size, mm
NF35151/N	Inert gas nozzle/Orifice DN15	½	15	44	1.6 – 10
NF35201/N	Inert gas nozzle/Orifice DN20	¾	20	55	7 – 14
NF35251/N	Inert gas nozzle/Orifice DN25	1	25	67	10 – 18
NF35321/N	Inert gas nozzle/Orifice DN32	1 ¼	32	82	12 – 23
NF35401/N	Inert gas nozzle/Orifice DN40	1 ½	40	93	15 - 26

Connection thread: Rp\* to ISO 7-1 EN10226-1 or option for NPT available upon request

For orifice diameters less than 3.0mm fit nozzle filter NF35159 between Orifice Disc and Circlip.

Material: Brass/ stainless steel (St.St. to special order)

Identification: Part number and orifice diameter on nozzle body

Maximum working pressure: 60 Bar

Suitable for indoor applications

Fit using PTFE tape

Visually check every 6 months for blockages, damages or corrosion

Nozzles identified on the VDS hydraulic calculation by a prefix of 51XXX